

Montana Alberta Tie Ltd.

Presentation to Montana Energy Summit

October 18, 2005

By: Lorry Wilson



OUTLINE

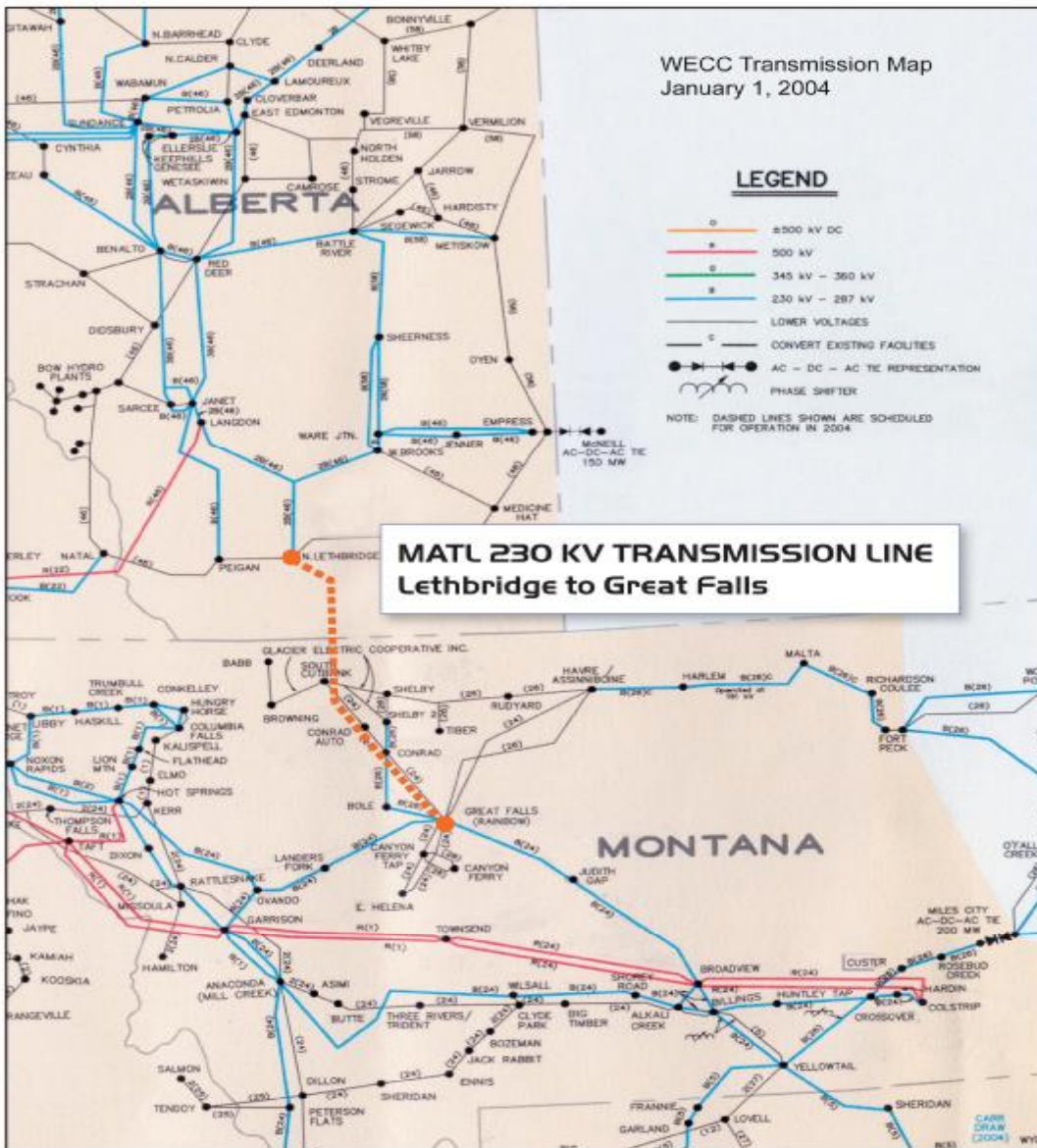
- Business Concept
- MATL Project Overview
- Policy Issues
- MATL Benefits



Merchant Line Concept

- New approach for transmission
- Power pipeline
- User pay - no burden on regulated rate payers
- Funded by private investors
- Shippers rent capacity on take or pay basis

Fig. 1 Transmission Map



MATL Overview

- AC Transmission line between Lethbridge, Alberta and Great Falls, Montana
 - Length 203 miles (326 km)
 - Voltage 230 kV
- Transfer Capability 300 MW
- Bi-directional flow controlled by phase shifting transformer
- In service date - Q1 2007
- Approximate cost: \$85 Million (\$100 Million CAD)



Construction

- ABB - Stations and Transformer
- SNC Lavalin - Transmission

Environmental & ROW

- Environmental - AMEC
- ROW - Martin Geomatics, Scott Land & Compton Signatures



Right of Way - Typical Terrain





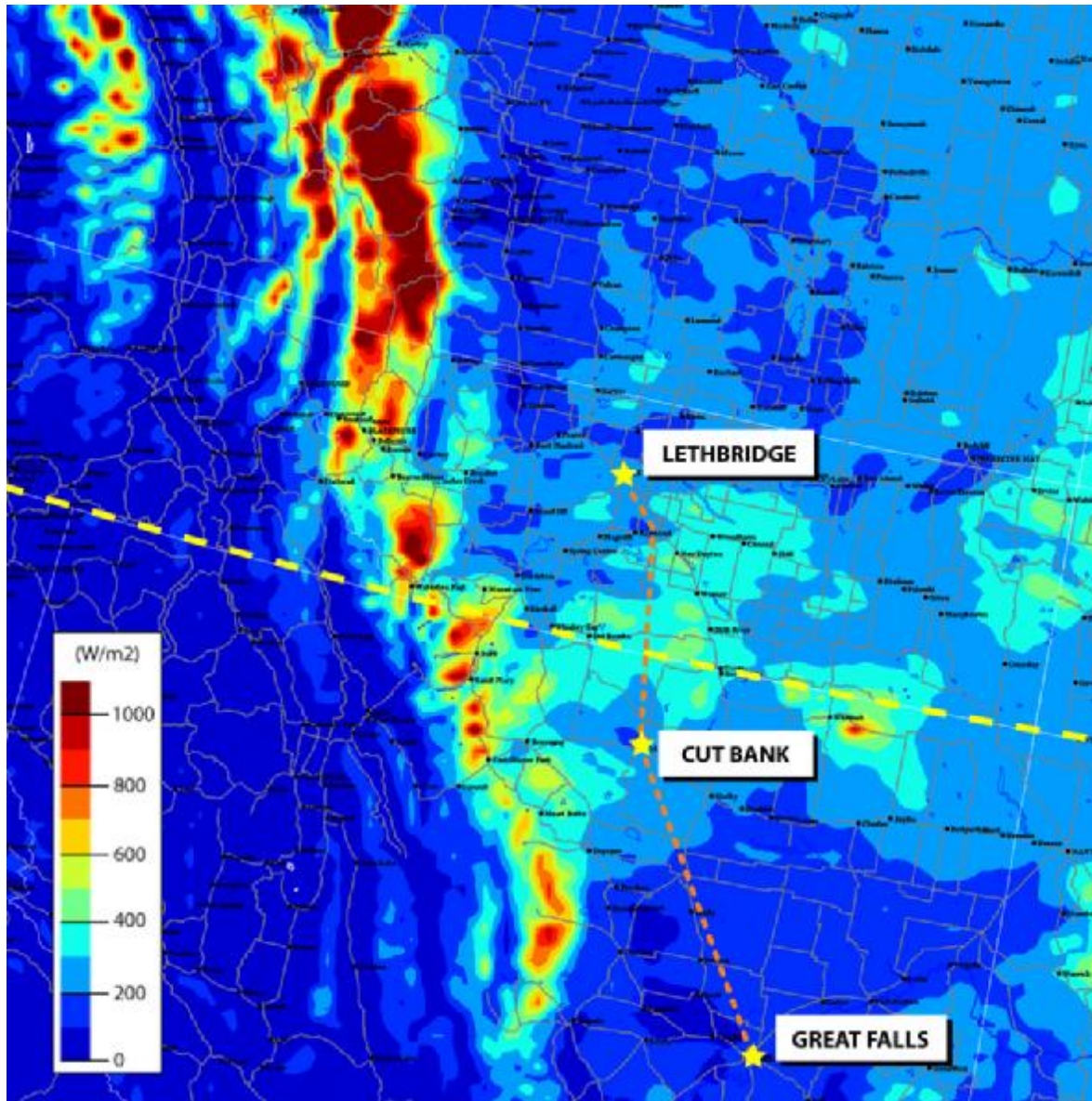


Fig. 2 Wind Atlas

Canada Wind Energy Atlas
Southern Alberta Mean
Wind Energy at Height of
50m. www.windatlas.ca

MONTANA ALBERTA TIE LTD



Project Status

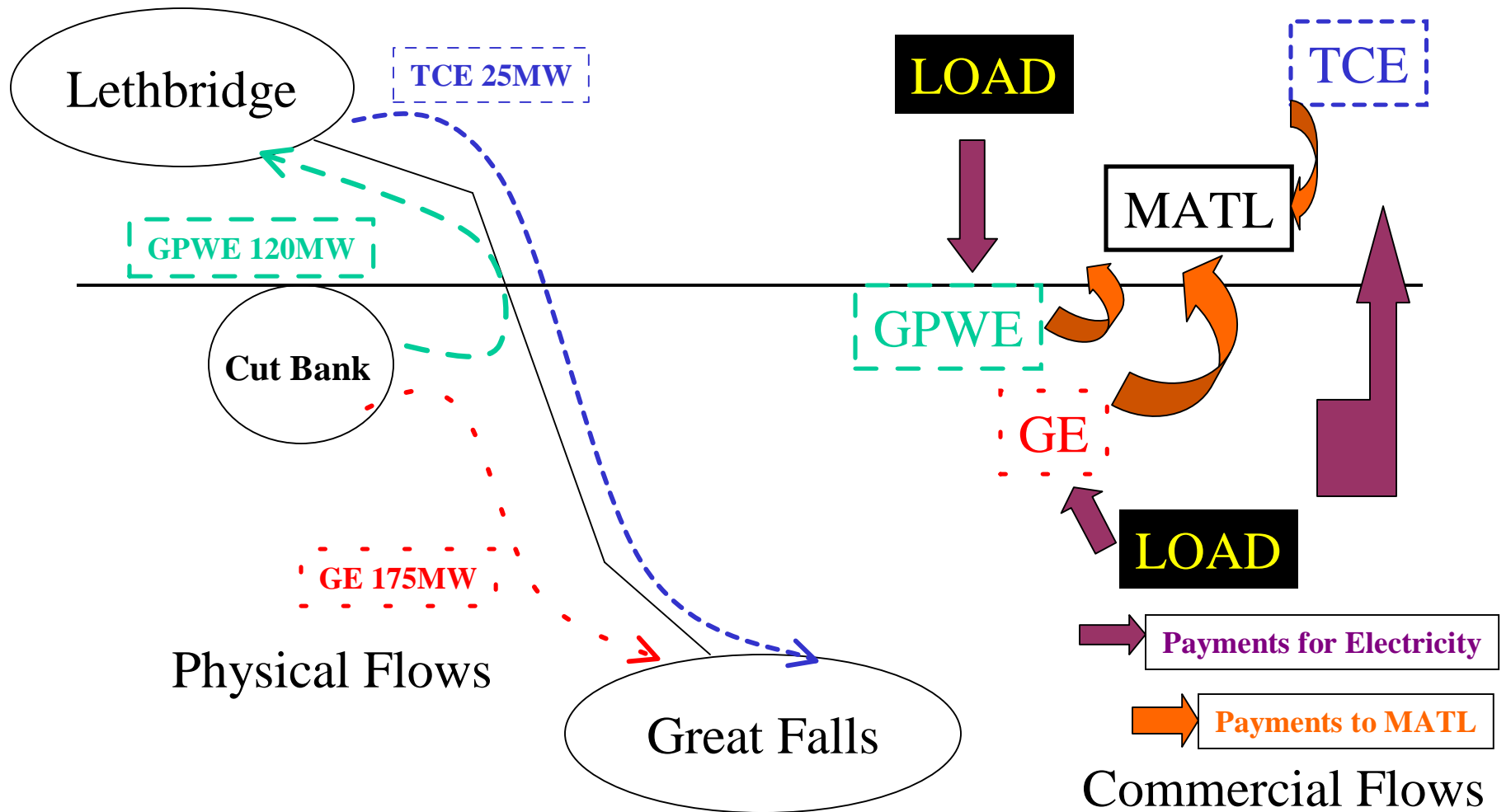
- Open Season - April 2005
- Tariff filed with FERC - April 2005
- Open Season approved - July 2005
- Environmental studies 90% complete
- Major Facilities Siting Act Montana DEQ - October 2005



Project Status (cont.)

- Presidential Permit application U.S. Department of Energy - October 2005
- Equivalent Canadian applications - November 2005
- Interconnection requests with Northwestern, Alberta Electric System Operator & Glacier - July

Open Season Results



Project Status - Construction

- Memorandums of Understanding & pre-engineering agreements signed
 - SNC Lavalin - power line
 - ABB - transformer and substations
- Construction start - July 2006
- Completion date - December 2006
- In-service date - January 2007



Policy Issues

- Merchant transmission classification for property tax
- Extended time frame for regulatory approval
- Rate pancaking for transmission
- Transmission bottlenecks



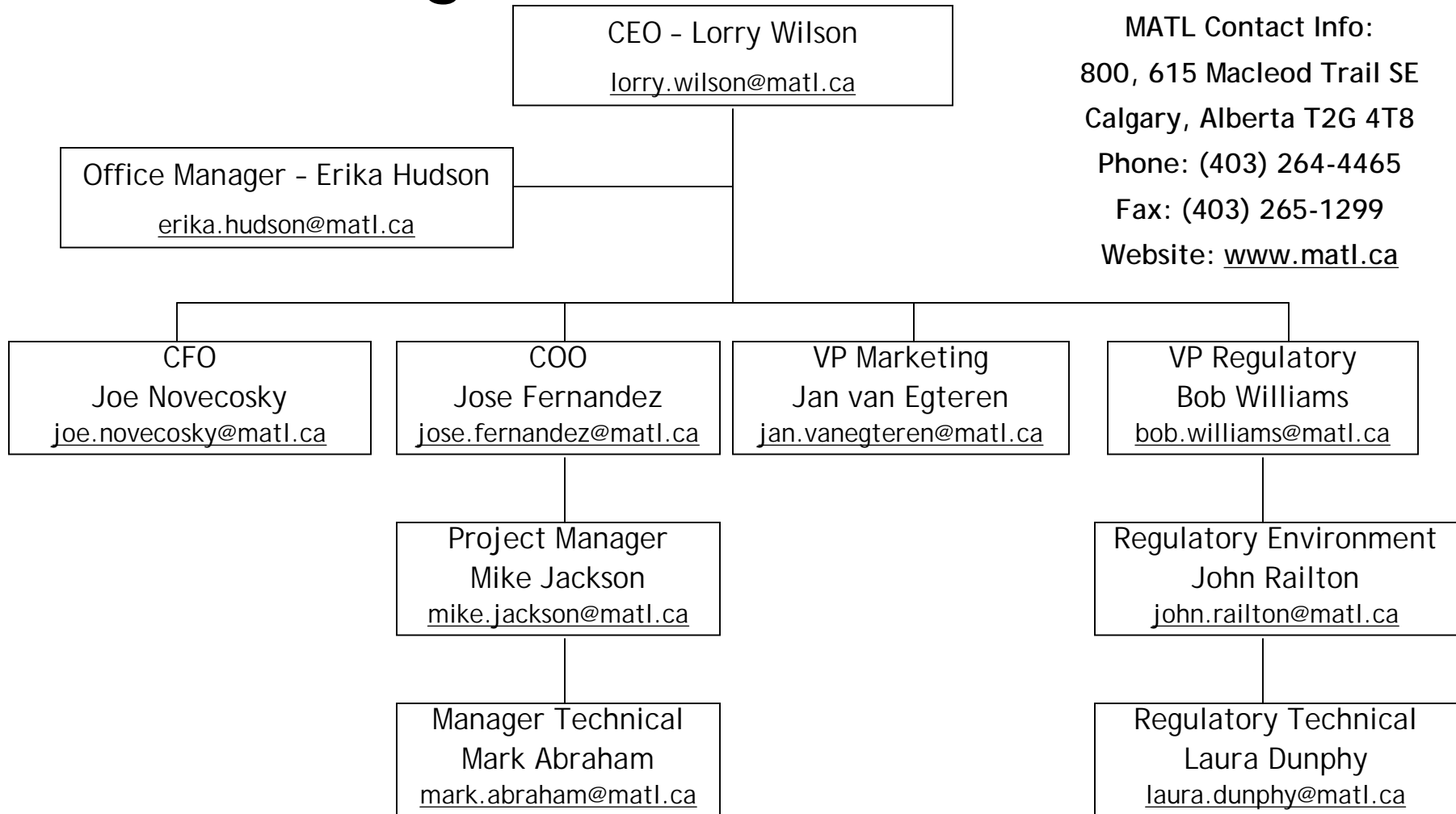
MATL Benefits

- Material and services procurement
- Construction jobs
- Increase power market competition
- Increased power trade & arbitrage opportunities
 - Alberta, Mid-C and MISO

MATL Benefits (cont.)

- Increased utilization of transmission assets
- Increased power system reliability
- Enables the development of green energy wind projects

Organizational Chart



MATL Contact Info:
800, 615 Macleod Trail SE
Calgary, Alberta T2G 4T8
Phone: (403) 264-4465
Fax: (403) 265-1299
Website: www.matl.ca



MONTANA ALBERTA TIE LTD

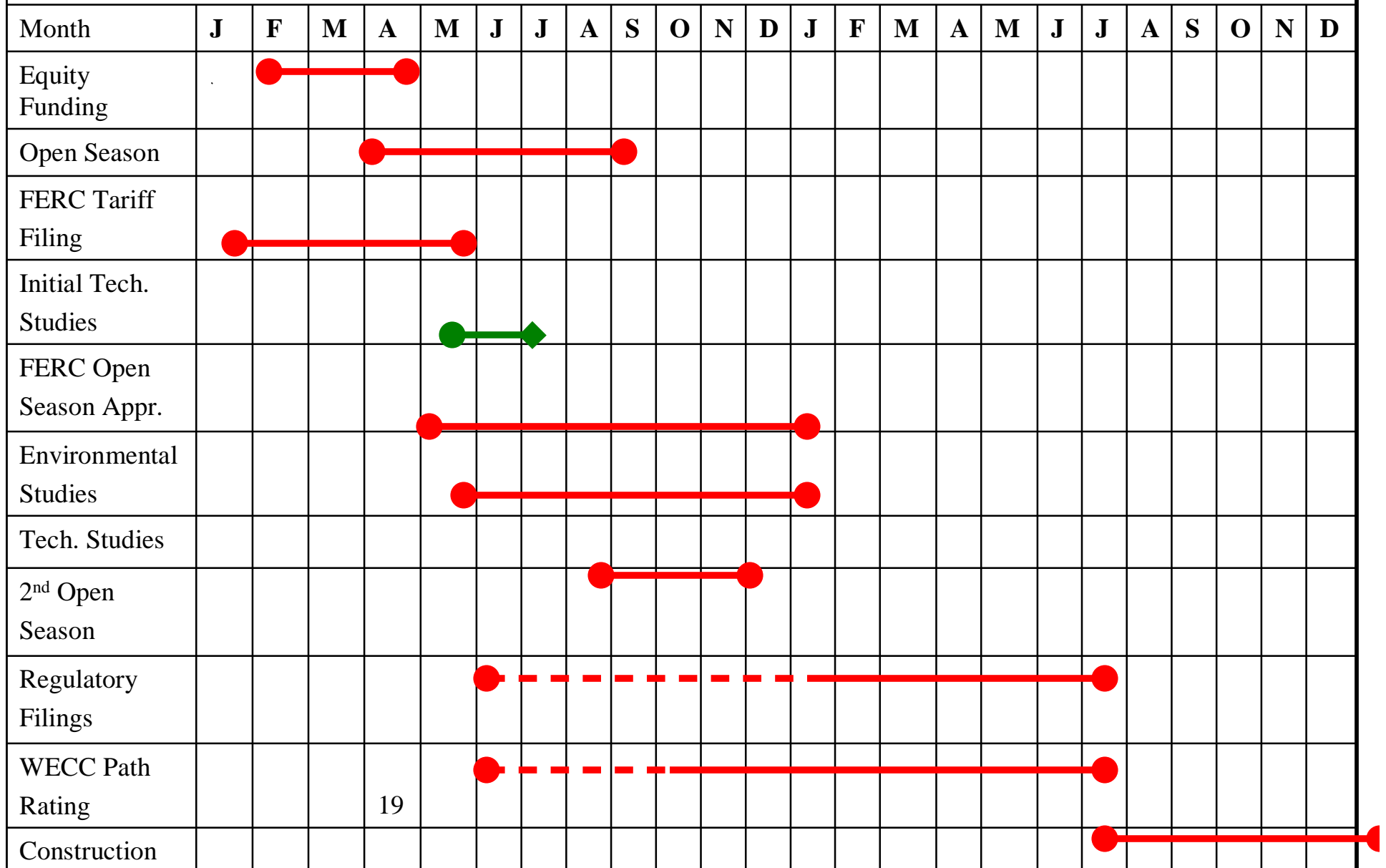


Questions?



©Powergen Renewables

Major Milestones 2005 - 2006



OASIS Auction Module

- Purchase Open Access Technology Inc. WestTrans system (Regional Open Access Same Time Information System "OASIS")
 - Post MATL hourly capacity on WestTrans OASIS
 - Bidders can buy one hour blocks up to one year
 - Time limited auctions where highest valued and longest term bids win capacity
 - Close date for 2007 annual capacity - Sept. 30, 2006. Close dates for shorter time periods fall after close date for annual capacity
 - MATL accepts requests for periods > one year in writing or via OASIS site
 - Publish such requests and provide a notice period for competitive responses (mini open season upon request)